

Featured Listing

JESSARI
REALTY GROUP



2274 Evelyn Lane
Sooke, BC

Presented by: Sari Ringma - Personal Real Estate Corporation, Jessica Wageman, CB Oceanside



<https://sites.listvt.com/2274evelynlanev9z0w3>



Stunning Home



Scan Here
for More Details

4 bedrooms

3 bathrooms

2,090 SQFT

NO GST! Nearly new 4 bed+den home in desirable Woodland Creek. This residence offers a refined yet welcoming aesthetic w/ thoughtfully curated finishes throughout. A stunning kitchen anchors the space, featuring quartz countertops, soft-close cabinetry, premium stainless steel appliances & generous pantry, all flowing seamlessly into the dining & living areas where a sleek fireplace adds warmth & style. Upstairs 4 well-appointed bedrooms provide ideal separation for families, including a spacious primary retreat with walk-in closet & spa-inspired ensuite. Main-floor den offers the perfect space for a home office/guest room. Comfort is elevated w/ features such as heated tile floors, ductless heat pump, extra pantry storage & custom cellular shades throughout. Set on a quiet no-through road, just steps to parks & schools, this home offers the perfect balance of peaceful living & everyday convenience. A rare opportunity to own a beautifully finished, nearly new resale home—w/out the GST.

2274 Evelyn Lane - Sooke, V9z 0w3



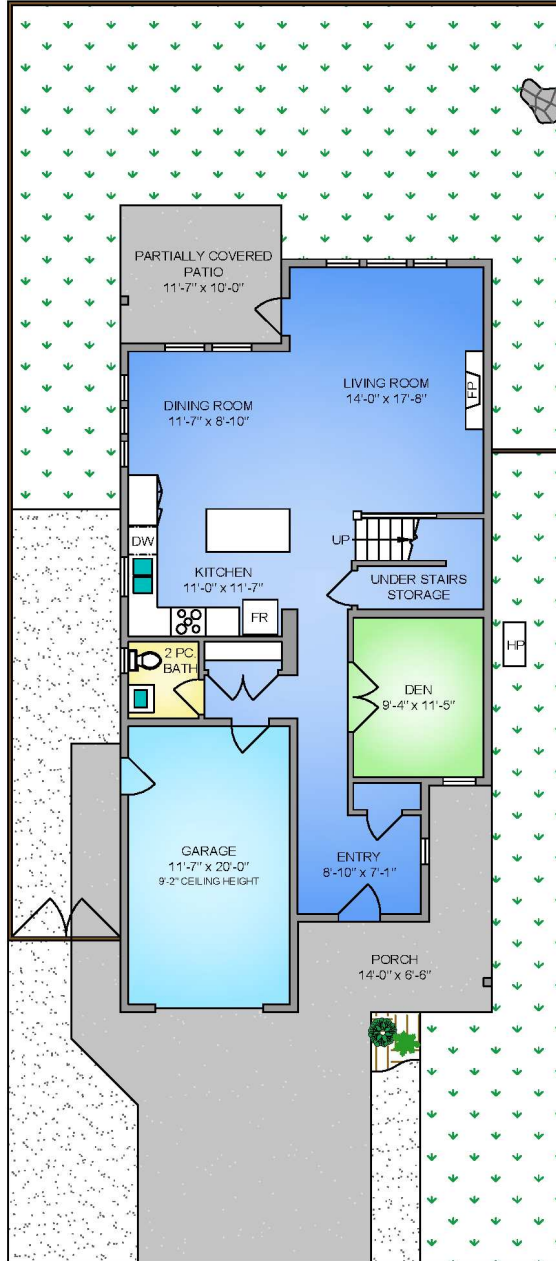
Amazing Features

JESSARI
REALTY GROUP

Heated Floors | Large Kitchen | Open Floor Plan | Oversized Windows
Quartz Countertops | Side-by-Side Washer and Dryer | Stainless Steel Appliances
Walk-In Closets

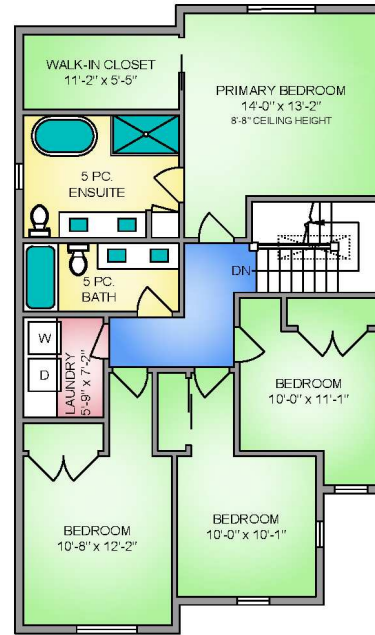


MAIN FLOOR
974 SQ. FT.
 9'-0" CEILING HEIGHT



JESSARI
 REALTY GROUP

UPPER FLOOR
1116 SQ. FT.
 8'-0" to 8'-8" CEILING HEIGHT



NORTH



2274 EVELYN LANE
 APRIL 28, 2026
 PREPARED FOR THE EXCLUSIVE USE OF THE JESSARI REALTY GROUP
 PLANS MAY NOT BE 100% ACCURATE. IF BUYER CALLS BUYER TO VERIFY.

FLOOR	AREA (SQ. FT.)		
	FINISHED	GARAGE	PORCH / PATIO
MAIN	974	260	204
UPPER	1116	-	-
TOTAL	2090	260	204



250-884-9753
 matt@propermeasure.com
 www.propermeasure.com

Presented by



Sari Ringma - Personal Real Estate Corporation, Jessica Wageman

ringma@telus.net

250-893-8102

<http://jessarirealtygroup.com>

JESSARI
 REALTY GROUP